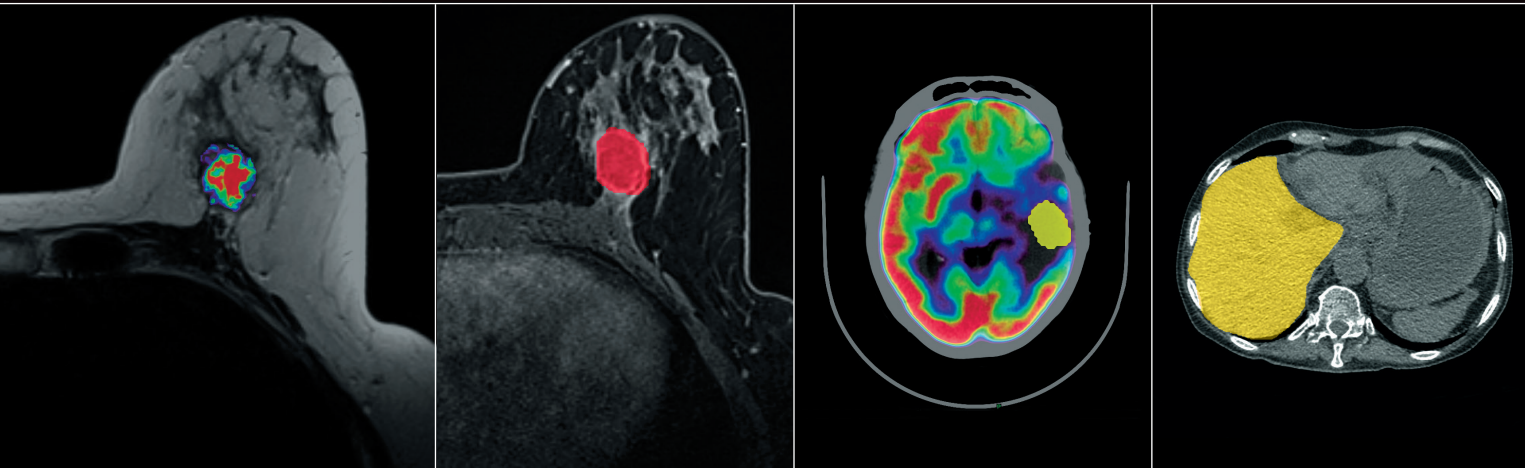


# TEXTURE PACKAGE



Texture is an all anatomies and imaging modalities (MRI, CT-Scan, PET-Scan and PET-MRI) texture analysis and computation solution.

## PRODUCT DESCRIPTION

- Preset customization
- Load multi-volumes series
- Follow-up
- SUV values available in findings
- Pre-processing: filtering, normalization, discretization, resampling
- Signal to Noise Ratio information available in the findings
- Load post-processed series: IVIM, ADC, CBV, etc.
- Multimodality and multi-organs: CT, MRI, PET, PET/MRI
- Export csv
- VOI management: load pre-existing VOI or compute directly in the plug-in
- 107 available features
- Multi-screen

## OTHER AVAILABLE SOLUTIONS

**Expert package:** complete solution to manage neurology, oncology, MSK and metabolic disorders imaging

**Body package:** complete solution to manage oncology, MSK and metabolic disorders imaging

**Neuro package:** complete solution to answer clinical queries in neuro-oncology and neuro-vascular imaging

# REQUIREMENTS

## System & Software Requirements

<b>Operating System</b>	Windows Desktop (x64): 7 / 8 / 10 (x64) Windows Server (x64): 2008 / 2008 R2 / 2012 / 2012 R2 / 2016 / 2016 R2
<b>Software</b>	Microsoft Visual C++ 2012 Redistributable (x64) Microsoft Visual C++ 2015 Redistributable (x64) PDF Reader

## Stand-alone

<b>CPU</b>	Intel® Core / i7 / Xeon processor with 4 cores at 3.0+ GHz or 6 cores at 2.4+ GHz supporting SSE4.2 instructions	
<b>Memory</b>	24 GB	
<b>GPU</b>	Graphic card with at least the technical specs below: <ul style="list-style-type: none"><li>- Memory Type : GDDR5</li><li>- Core Clock Speed : 1500MHz</li><li>- Memory Clock Speed : 8000MHz</li></ul>	Compatibles GPU Series: <ul style="list-style-type: none"><li>- Nvidia GeForce (Series Kepler, Maxwell, Pascal, Turing)</li><li>- AMD ATI (Series Radeon Rx)</li></ul>
<b>Storage</b>	150+ GB	
<b>Network</b>	1 Gb Ethernet port	

## Server

<b>CPU</b>	Intel® Core i7 / Xeon processor with 4 cores at 3.0+ GHz or 6 cores at 2.4+ GHz supporting SSE4.2 instructions	
<b>Memory</b>	12 GB	
<b>Storage</b>	150+ GB	
<b>Network</b>	1 Gb Ethernet port	

## Thick client

<b>CPU</b>	Intel® Core / i7 / Xeon processor with 4 cores at 3.0+ GHz or 6 cores at 2.4+ GHz supporting SSE4.2 instructions	
<b>Memory</b>	24 GB	
<b>GPU</b>	Graphic card with at least the technical specs below: <ul style="list-style-type: none"><li>- Memory Type : GDDR5</li><li>- Core Clock Speed : 1500MHz</li><li>- Memory Clock Speed : 8000MHz</li></ul>	Compatibles GPU Series: <ul style="list-style-type: none"><li>- Nvidia GeForce (Series Kepler, Maxwell, Pascal, Turing)</li><li>- AMD ATI (Series Radeon Rx)</li></ul>
<b>Storage</b>	5 GB	
<b>Network</b>	1 Gb Ethernet port	

Note: Olea Sphere® 3D rendering is not optimal with Nvidia Quadro Series.

## OLEA MEDICAL®

ZI Athelia IV - 93, avenue des Sorbiers  
13600 La Ciotat - FRANCE  
PH +33 4 42 71 24 20 - FX +33 4 42 71 24 27  
[www.olea-medical.com](http://www.olea-medical.com)

Olea Sphere® v3.0, medical imaging post-processing software, is a medical device manufactured and marketed by Olea Medical®. This medical device is reserved for health professionals. These software programs have been designed and manufactured according to the EN ISO 13485 Quality management system. Read the instructions in the notice carefully before any use. Instructions for Use are available on <http://www.olea-medical.com/en/>  
Manufacturer: Olea Medical® S.A.S. (France). Medical devices Class IIa / Notified body: CE 0459 GMED.  
For research use only. Not for use in diagnostic procedures.  
Copyright 2017 Harvard Medical School

**IMPROVED  
DIAGNOSIS  
FOR LIFE**