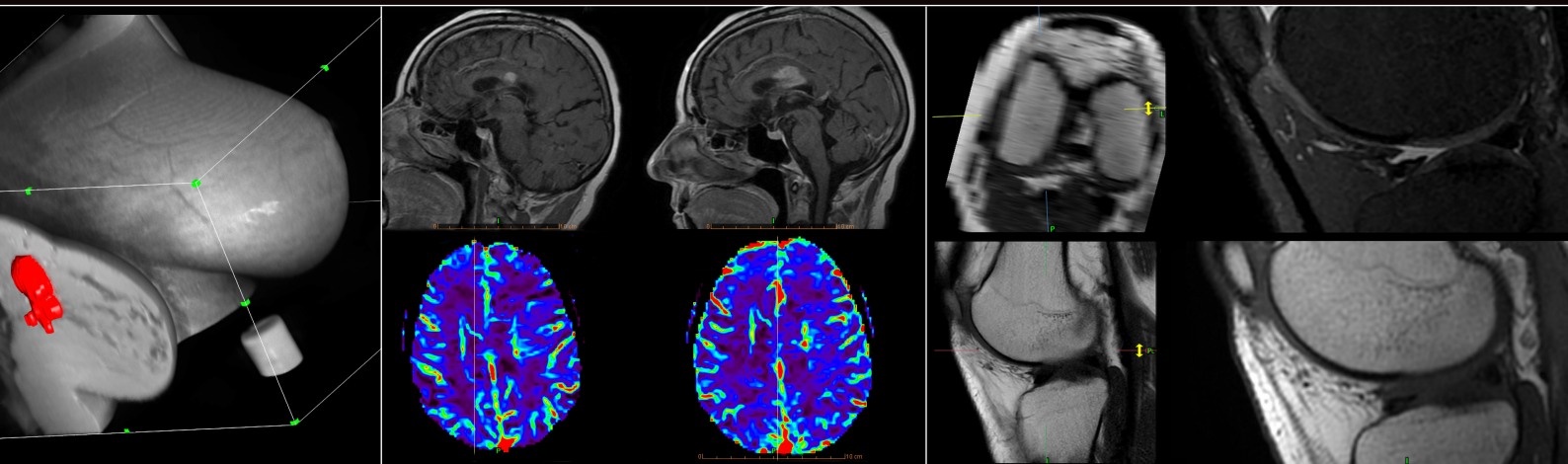


OLEA VISION[®] PACKAGE



Our Olea Vision[®] package is the unique solution to easily and productively review MRI and CT images.

PRODUCT DESCRIPTION

Olea Vision®: multi-modalities & vendor neutral viewer

MR 2D, 3D, 4D viewer: visualization | reformat | batch | MPR | curvilinear reformation³ | fusion | ROI Vascular visualization | stenosis measurements
MSK visualization tools | angles and metrics
Different timepoints comparison
Scrolling through different DICOM series types
MPR, MPVR, MIP, VR, double oblique
Subtraction of multiple series
Dynamic analysis of contrast agent evolution through time
2D, 3D scanner visualization
Direct access to advanced applications
Individual presets and layouts
Hanging protocol for a quicker analysis
Enhanced communication by sharing and printing (DICOM and Windows printers)

CLINICAL SPECIALTIES COVERED

Whole body

OTHER AVAILABLE SOLUTIONS

breastscape® v1.0: intuitive environment for MR breast characterization and follow-up

REQUIREMENTS

System & Software Requirements

Operating System	Windows Desktop (x64): 7 / 8 / 10 (x64) Windows Server (x64): 2008 / 2008 R2 / 2012 / 2012 R2 / 2016 / 2016 R2
Software	Microsoft Visual C++ 2012 Redistributable (x64) Microsoft Visual C++ 2015 Redistributable (x64) PDF Reader

Stand-alone

CPU	Intel® Core i7 / Xeon processor with 4 cores at 3.0+ GHz or 6 cores at 2.4+ GHz supporting SSE4.2 instructions	
Memory	12 GB	
GPU	Graphic card with at least the technical specs below: <ul style="list-style-type: none">- Memory Type : GDDR5- Core Clock Speed : 1500MHz- Memory Clock Speed : 8000MHz	Compatibles GPU Series: <ul style="list-style-type: none">- Nvidia GeForce (Series Kepler, Maxwell, Pascal, Turing)- AMD ATI (Series Radeon Rx)
Storage	150+ GB	
Network	1 Gb Ethernet port	

Server

CPU	Intel® Core i7 / Xeon processor with 4 cores at 3.0+ GHz or 6 cores at 2.4+ GHz supporting SSE4.2 instructions	
Memory	12 GB	
Storage	150+ GB	
Network	1 Gb Ethernet port	

Thick client

CPU	Intel® Core / i7 / Xeon processor with 4 cores at 3.0+ GHz or 6 cores at 2.4+ GHz supporting SSE4.2 instructions	
Memory	16 GB	
GPU	Graphic card with at least the technical specs below: <ul style="list-style-type: none">- Memory Type : GDDR5- Core Clock Speed : 1500MHz- Memory Clock Speed : 8000MHz	Compatibles GPU Series: <ul style="list-style-type: none">- Nvidia GeForce (Series Kepler, Maxwell, Pascal, Turing)- AMD ATI (Series Radeon Rx)
Storage	5 GB	
Network	1 Gb Ethernet port	

Note: Olea Sphere® 3D rendering is not optimal with Nvidia Quadro Series.

OLEA MEDICAL®

ZI Athelia IV - 93, avenue des Sorbiers
13600 La Ciotat - FRANCE
PH +33 4 42 71 24 20 - FX +33 4 42 71 24 27
www.olea-medical.com

Olea Sphere® v3.0 and breastscape® v1.0, medical imaging post-processing software, are medical devices manufactured and marketed by Olea Medical®. These medical devices are reserved for health professionals. These software programs have been designed and manufactured according to the EN ISO 13485 Quality management system.

Read the instructions in the notice carefully before any use. Instructions for Use are available on <http://www.olea-medical.com/en/>

Manufacturer: Olea Medical® S.A.S. (France). Medical devices Class IIa / Notified body: CE 0459 GMED.

**IMPROVED
DIAGNOSIS
FOR LIFE**