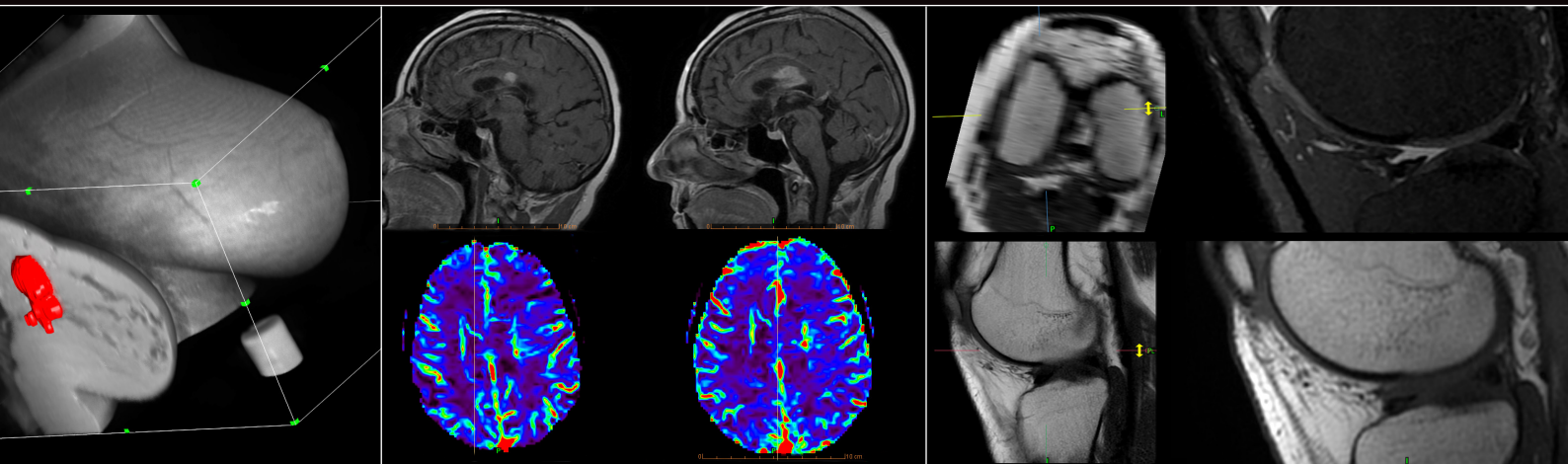


# OLEA VISION<sup>®</sup> EXTENSION PACKAGE



Our Olea Vision<sup>®</sup> package is the unique solution to easily and productively review MRI and CT images.

# PRODUCT DESCRIPTION

## **Olea Vision®: multi-modalities & vendor neutral viewer**

MR 2D, 3D, 4D viewer: visualization | reformat | batch | MPR | curvilinear reformation<sup>3</sup> | fusion | ROI Vascular visualization | stenosis measurements  
MSK visualization tools | angles and metrics  
Different timepoints comparison  
Scrolling through different DICOM series types  
MPR, MPVR, MIP, VR, double oblique  
Subtraction of multiple series<sup>3</sup>  
Dynamic analysis of contrast agent evolution through time  
2D, 3D scanner visualization  
Direct access to advanced applications  
Individual presets and layouts  
Hanging protocol for a quicker analysis  
Enhanced communication by sharing and printing (DICOM and Windows printers)

## **Diffusion: automatically computes diffusion maps**

Automatic presets: motion correction | noise reduction | background segmentation  
Automatic computed maps: ADC | Isotropic | Exponential  
Customizable configuration: spatial smoothing

## **Perfusion (DSC): automatically and accurately computes perfusion maps**

Automatic presets: motion correction | AIF | VOF | baseline | noise reduction | skull & background segmentation  
Automatic computed maps: CBF |  $rBV_{corrected}$  | K2 | MTT | TMAX | TTP | TMIP  
Customizable configurations: deconvolution methods | bayesian computation | downsampling | relaxivity | spatial smoothing | hematocrit

## **Kinetics: automatically computes qualitative maps to assess lesion heterogeneity**

Automatic presets: motion correction | noise reduction | background segmentation  
Automatic qualitative computed maps: Washin | Washout | Peak | SER | AUC | TME | Peak enhancement | Curve washout  
Customizable configurations: early signal index | downsampling | spatial smoothing | hematocrit

## **Analysis MR: quick assessment of full dataset**

Visualization: 2D, 3D | fusion | MPR  
Dedicated reports: PI-RADS v1 or v2  
Assessment: ROI | VOI segmentation | measures  
Communication: key images | screen captures | export to PACS | export to .csv file

# CLINICAL SPECIALTIES COVERED

Whole body

# OTHER AVAILABLE SOLUTIONS

**breastscape® v1.0:** intuitive environment for MR breast characterization and follow-up

# REQUIREMENTS

## System & Software Requirements

<b>Operating System</b>	Windows Desktop (x64): 7 / 8 / 10 (x64) Windows Server (x64): 2008 / 2008 R2 / 2012 / 2012 R2 / 2016 / 2016 R2
<b>Software</b>	Microsoft Visual C++ 2012 Redistributable (x64) Microsoft Visual C++ 2015 Redistributable (x64) PDF Reader

## Stand-alone

<b>CPU</b>	Intel® Core i7 / Xeon processor with 4 cores at 3.0+ GHz or 6 cores at 2.4+ GHz supporting SSE4.2 instructions	
<b>Memory</b>	12 GB	
<b>GPU</b>	Graphic card with at least the technical specs below: <ul style="list-style-type: none"><li>- Memory Type : GDDR5</li><li>- Core Clock Speed : 1500MHz</li><li>- Memory Clock Speed : 8000MHz</li></ul>	Compatibles GPU Series: <ul style="list-style-type: none"><li>- Nvidia GeForce (Series Kepler, Maxwell, Pascal, Turing)</li><li>- AMD ATI (Series Radeon Rx)</li></ul>
<b>Storage</b>	150+ GB	
<b>Network</b>	1 Gb Ethernet port	

## Server

<b>CPU</b>	Intel® Core i7 / Xeon processor with 4 cores at 3.0+ GHz or 6 cores at 2.4+ GHz supporting SSE4.2 instructions	
<b>Memory</b>	12 GB	
<b>Storage</b>	150+ GB	
<b>Network</b>	1 Gb Ethernet port	

## Thick client

<b>CPU</b>	Intel® Core / i7 / Xeon processor with 4 cores at 3.0+ GHz or 6 cores at 2.4+ GHz supporting SSE4.2 instructions	
<b>Memory</b>	16 GB	
<b>GPU</b>	Graphic card with at least the technical specs below: <ul style="list-style-type: none"><li>- Memory Type : GDDR5</li><li>- Core Clock Speed : 1500MHz</li><li>- Memory Clock Speed : 8000MHz</li></ul>	Compatibles GPU Series: <ul style="list-style-type: none"><li>- Nvidia GeForce (Series Kepler, Maxwell, Pascal, Turing)</li><li>- AMD ATI (Series Radeon Rx)</li></ul>
<b>Storage</b>	5 GB	
<b>Network</b>	1 Gb Ethernet port	

Note: Olea Sphere® 3D rendering is not optimal with Nvidia Quadro Series.

## OLEA MEDICAL®

ZI Athelia IV - 93, avenue des Sorbiers  
13600 La Ciotat - FRANCE  
PH +33 4 42 71 24 20 - FX +33 4 42 71 24 27  
[www.olea-medical.com](http://www.olea-medical.com)

Olea Sphere® v3.0 and breastscape® v1.0, medical imaging post-processing software, are medical devices manufactured and marketed by Olea Medical®. These medical devices are reserved for health professionals. These software programs have been designed and manufactured according to the EN ISO 13485 Quality management system.

Read the instructions in the notice carefully before any use. Instructions for Use are available on <http://www.olea-medical.com/en/>

Manufacturer: Olea Medical® S.A.S. (France). Medical devices Class IIa / Notified body: CE 0459 GMED.

**IMPROVED  
DIAGNOSIS  
FOR LIFE**